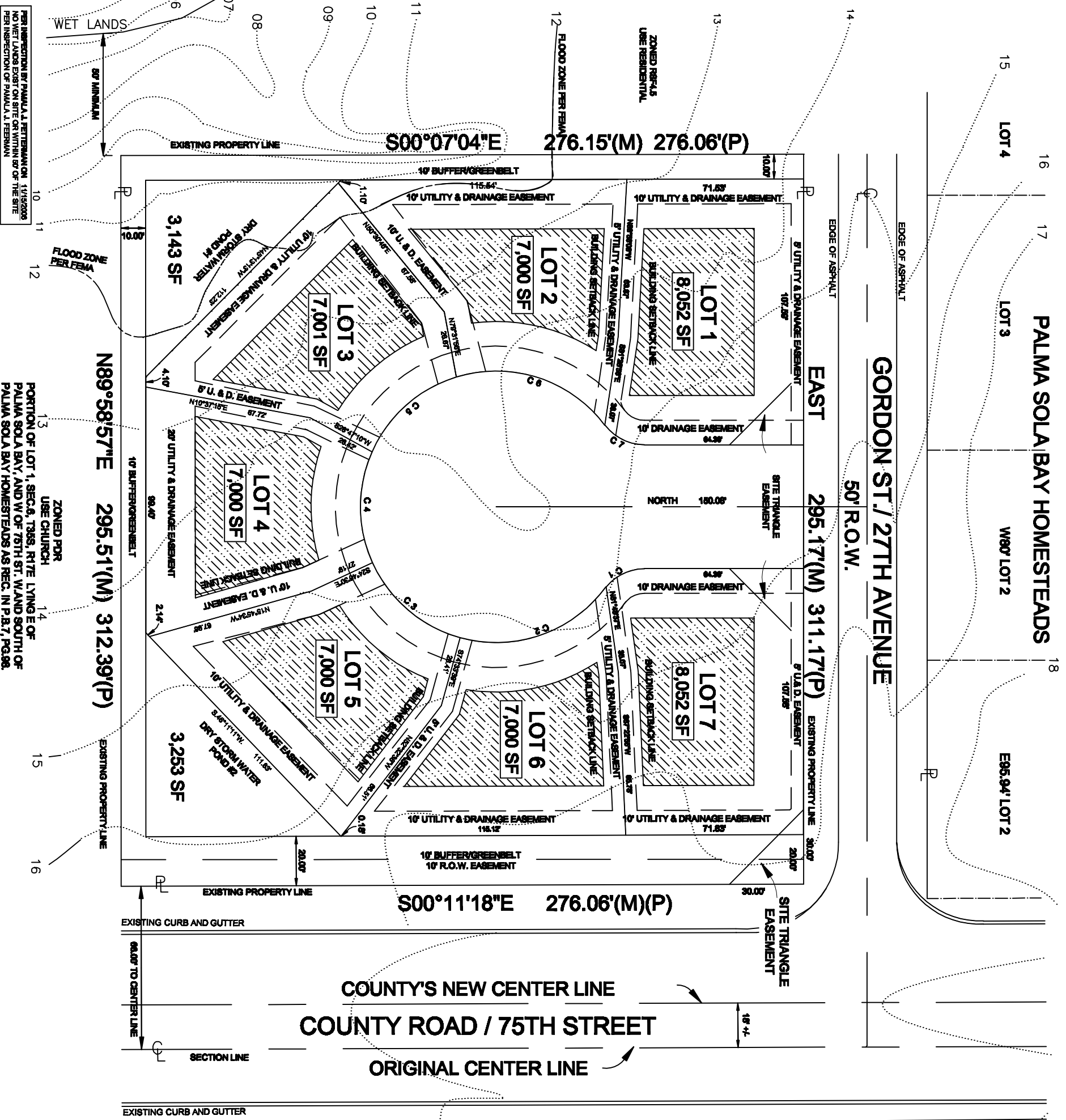


PALMA SOLA BAY HOMESTEADS

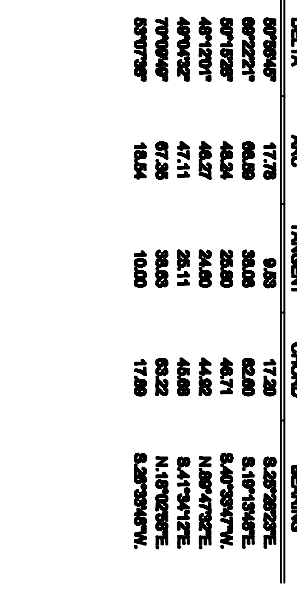


PER INSPECTION BY PALMA SOLA & FERTERMAN ON 11/19/2008
NO WET LANDS EXIST ON SITE OR WITHIN 50' OF THE SITE
PER INSPECTION OF PALMA SOLA & FERTERMAN

PORTION OF LOT 1, SEC. 6, T. 36S., R. 17E. LYING E OF
PALMA SOLA BAY AND W OF 75TH ST. W AND SOUTH OF
PALMA SOLA BAY HOMESTEADS AS REC. IN P.B. 7, PG. 88.

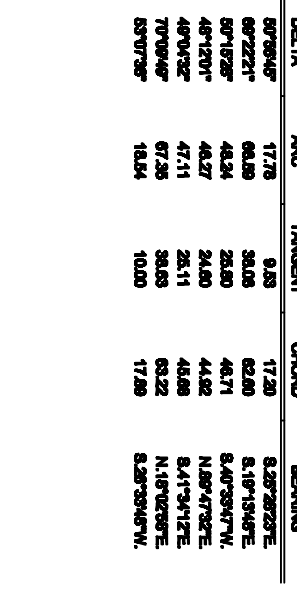
CURVE DATA TABLE

NO.	RADIUS	DELTA	ARC	TANGENT	CHORD	BEARING
C1	20.00	50°56'49"	17.78	9.33	17.20	S.25°26'23"E
C2	55.00	69°22'21"	68.28	36.08	62.80	S.19°13'49"E
C3	55.00	50°18'28"	48.24	25.80	46.71	S.40°33'47"W
C4	55.00	48°12'01"	46.27	24.80	44.82	N.88°47'32"E
C5	55.00	49°04'32"	47.11	25.11	45.88	S.41°34'12"E
C6	55.00	70°08'49"	67.25	36.83	63.22	N.18°25'57"E
C7	20.00	53°07'38"	18.94	10.00	17.89	S.28°33'48"W



USE RESIDENTIAL APARTMENTS ZONED PDR COUNTRY VILLAGE

NOTES:
 1. BOUNDARY INFORMATION ON THIS SHEET WAS OBTAINED FROM A DRAWING FILE PREPARED BY GLOBAL SURVEYING OF BRADENTON, LLC/TONY L PURSLEY, PMS NO. 4451
 2. THIS IS NOT A SURVEY.
 3. STREET NAME SIGN TO BE INSTALLED.
 4. U. & D. EASEMENT = UTILITY & DRAINAGE
 5. BUILDING REAR SETBACK LINE IS 20'
 6. BUILDING FRONT SETBACK LINE IS 20'
 7. BUILDING SIDE SETBACK LINE IS 8'
 8. ALL LOT WIDTHS AT BUILDING LINE ARE 70.00'



PRELIMINARY PLAT BUNGALOW PARK
 A REPLAT OF LOTS 31, 32 & 33 PALMA SOLA BAY HOMESTEADS SUBDIVISION, LOCATED IN SECTION 6, T. 36S., R. 17E., MANATEE COUNTY, FLORIDA.

TASK	INITIALS	DATE
DRAWN	GD	JULY, 2009
DRAWN	MR	AUGUST, 2009
CHECKED	LI	AUGUST, 2009
QUALITY CHK.		

PROJECT NO. 04899-02

DESCRIPTION	DATE
ADD CENTER LINE TO EXISTING STREETS	08/09
REVISED	07/09
REVISION & CONSTRUCTION DRAWINGS	08/09

BASIC
 BAY AREA SINKHOLE INVESTIGATION & CIVIL ENGINEERING
 2103 East 2nd Avenue, Tampa, FL 33605
 www.basic-engineering@tampabay.fl.com
 Ph: 813-248-3344 Fax: 813-248-3366 *C.O.A. #26869